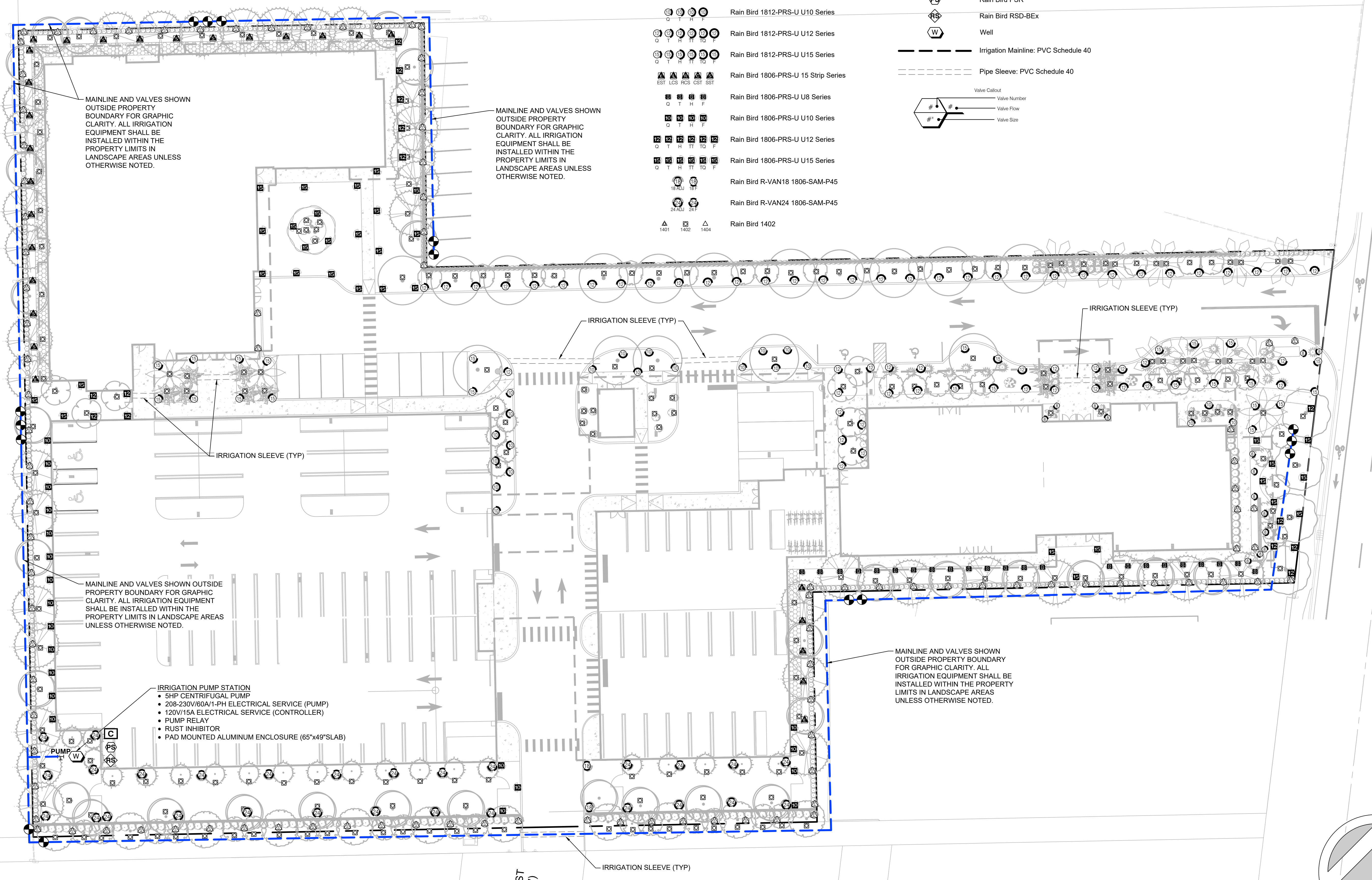


IRRIGATION SCHEDULE

SYMBOL	MANUFACTURER/MODEL	SYMBOL	MANUFACTURER/MODEL
	Rain Bird 1812-PRS-U 15 Strip Series		Rain Bird EFB-CP
	Rain Bird 1812-PRS-U U8 Series		Rain Bird ESPLXME2P w/ (1) ESPLXMSM12
	Rain Bird 1812-PRS-U U10 Series		Rain Bird PSR
	Rain Bird 1812-PRS-U U12 Series		Rain Bird RSD-BEx
	Rain Bird 1812-PRS-U U15 Series		Well
	Rain Bird 1806-PRS-U 15 Strip Series		Irrigation Mainline: PVC Schedule 40
	Rain Bird 1806-PRS-U U8 Series		Pipe Sleeve: PVC Schedule 40
	Rain Bird 1806-PRS-U U10 Series		Valve Callout
	Rain Bird 1806-PRS-U U12 Series		Valve Number
	Rain Bird 1806-PRS-U U15 Series		Valve Flow
	Rain Bird R-VAN18 1806-SAM-P45		Valve Size
	Rain Bird R-VAN24 1806-SAM-P45		
	Rain Bird 1402		



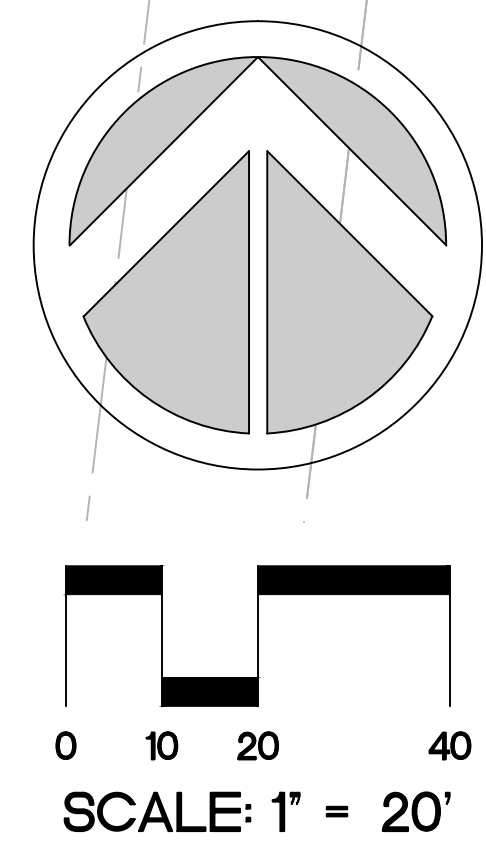
MAINLINE AND VALVES SHOWN OUTSIDE PROPERTY BOUNDARY FOR GRAPHIC CLARITY. ALL IRRIGATION EQUIPMENT SHALL BE INSTALLED WITHIN THE PROPERTY LIMITS IN LANDSCAPE AREAS UNLESS OTHERWISE NOTED.

MAINLINE AND VALVES SHOWN OUTSIDE PROPERTY BOUNDARY FOR GRAPHIC CLARITY. ALL IRRIGATION EQUIPMENT SHALL BE INSTALLED WITHIN THE PROPERTY LIMITS IN LANDSCAPE AREAS UNLESS OTHERWISE NOTED.

MAINLINE AND VALVES SHOWN OUTSIDE PROPERTY BOUNDARY FOR GRAPHIC CLARITY. ALL IRRIGATION EQUIPMENT SHALL BE INSTALLED WITHIN THE PROPERTY LIMITS IN LANDSCAPE AREAS UNLESS OTHERWISE NOTED.

MAINLINE AND VALVES SHOWN OUTSIDE PROPERTY BOUNDARY FOR GRAPHIC CLARITY. ALL IRRIGATION EQUIPMENT SHALL BE INSTALLED WITHIN THE PROPERTY LIMITS IN LANDSCAPE AREAS UNLESS OTHERWISE NOTED.

- IRRIGATION PUMP STATION
- 5HP CENTRIFUGAL PUMP
  - 208-230V/60A/1-PH ELECTRICAL SERVICE (PUMP)
  - 120V/15A ELECTRICAL SERVICE (CONTROLLER)
  - PUMP RELAY
  - RUST INHIBITOR
  - PAD MOUNTED ALUMINUM ENCLOSURE (65"x49"SLAB)



Sheet Title	IRRIGATION PLAN
Revision Dates	10/27/25 - CITY COMMENTS
Date	10/27/2025
Sheet Number	IR-1
Seal	
STEPHEN M PECCIA, PLA LA 6667289	